

# **THE THINKING BUDDHA**

**THE DIMENSIONS OF THOUGHT  
GIVEN TO LOVE  
OPENING INTO THE WORLD**

## **The Triple Gem**

the triple gem is the light of the world  
the different tones separated  
by the prism of the world  
which is the jewel incarnate

and as the prism shall turn  
the heart shall learn  
all its facets



the Lord Buddha  
cool blue from heaven above  
the golden light of wisdom  
joining from the world below  
shall part the crimson passions

## **A meeting of past and present**

*there is only knowing*

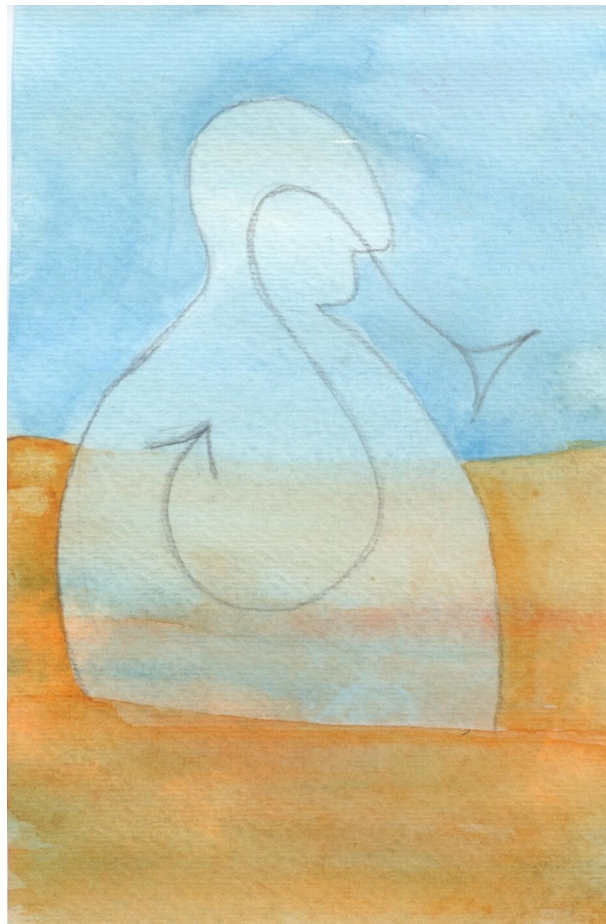
*the meeting and merging of past and present*

*our knowing lies in the present  
the objects within our knowing lie in the past*

*in the meeting there is a tension  
as between death and birth  
or as between heaven and earth*

*only by touching the earth can heavenly knowing  
find the ground, the roots of all creation, in the humble soil*

*(breathing in)*



*only by abandoning ownership, possession and control  
may the earthy past become fully part of the heavenly present  
and reinvented, redefined  
nourish new birth  
such is the alchemy of pure knowing*

*(breathing out)*



*the pure knowing that, most of all, knows itself  
and, thus knowing, the heart overcomes the elements*



setting-sky-heart



heart-cloud-desert



desert-cloud-heart



heart-sun-desert





sun-rise-heart

